

HIGOLD®

## Shearer Swing Tray 3.0

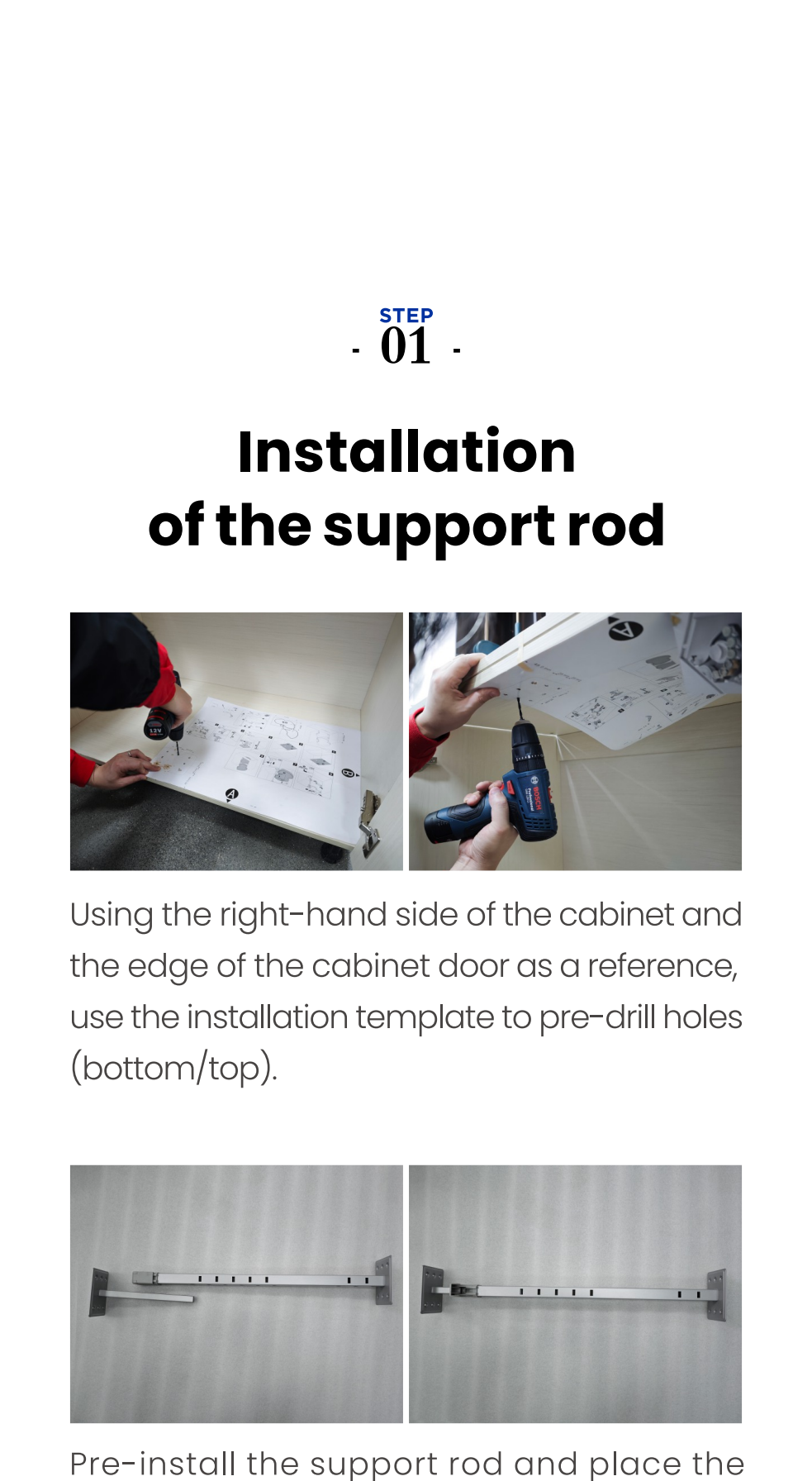
(Take right opening type installation as an example)

Installation manual



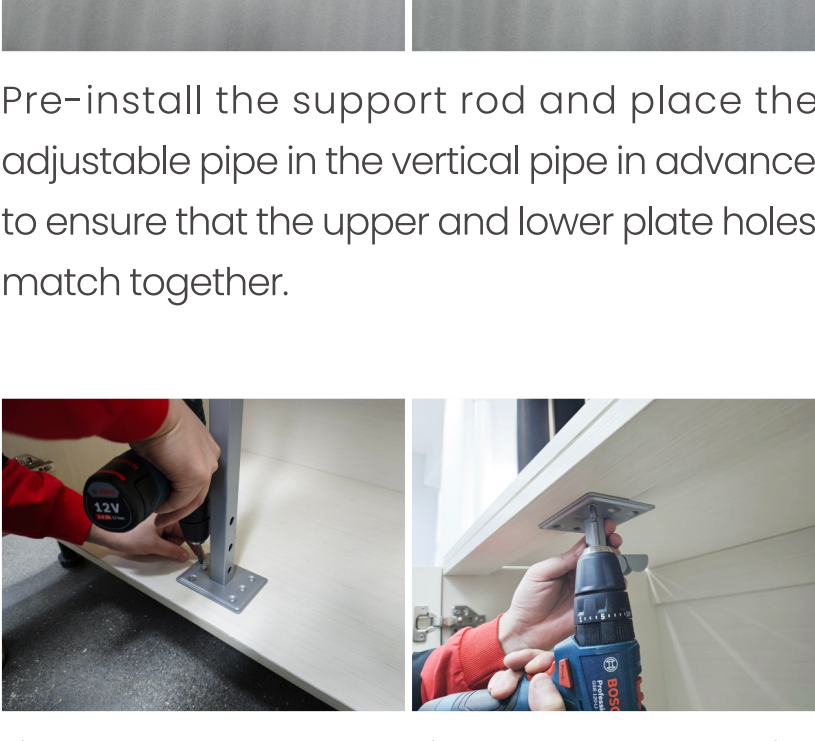
### Shearer series

HIGOLD®  
Leading design Perfect experience

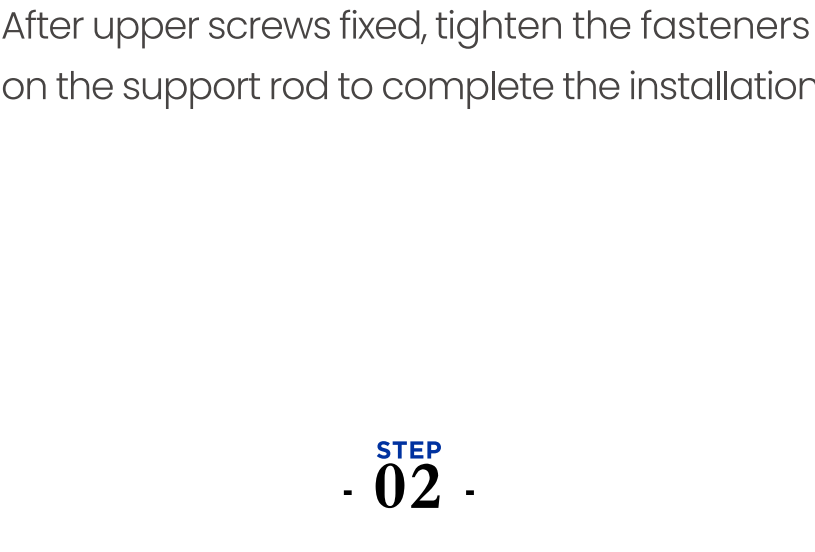


#### STEP - 01 -

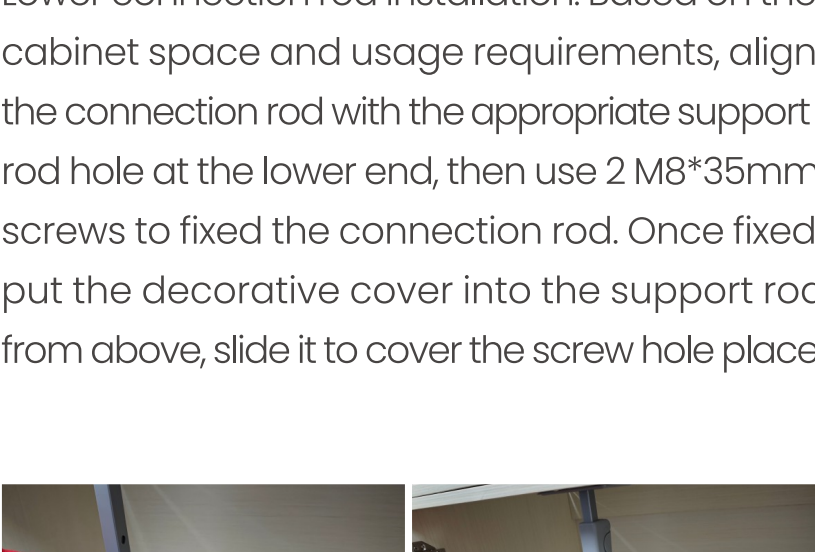
### Installation of the support rod



Using the right-hand side of the cabinet and the edge of the cabinet door as a reference, use the installation template to pre-drill holes (bottom/top).



Pre-install the support rod and place the adjustable pipe in the vertical pipe in advance to ensure that the upper and lower plate holes match together.



Fixed the support rod: Align the lower end with the pre-drilled hole and fixed it with a 3.5 x 16mm self-tapping screw. Adjust the upper end to the appropriate length using the adjustable tube, then secure it with a self-tapping screw.



After upper screws fixed, tighten the fasteners on the support rod to complete the installation.

#### STEP - 02 -

### Installation of the connection rods and dampers



Lower connection rod installation: Based on the cabinet space and usage requirements, align the connection rod with the appropriate support rod hole at the lower end, then use 2 M8\*35mm screws to fixed the connection rod. Once fixed, put the decorative cover into the support rod from above, slide it to cover the screw hole place.



Same as above, assemble the upper connection rod.



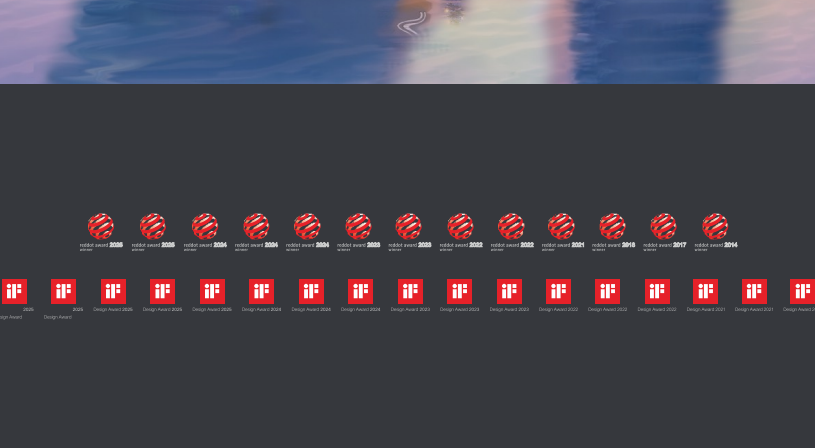
Install the lower connection rod damper, insert the tail end hole of the damper into the mechanical arm, align the position, and then snap it into the rotating hole of the connection rod (note the direction of the damper and do not install it backwards).



Same as above, install the upper connection rod damper.

#### STEP - 03 -

### Installation of the trays



Installation of the lower tray: Align the rotating pin of the tray with the two holes on the lower end connection rod for installation. Meanwhile, adjust the movable sliding groove of the damper to ensure the short pin is positioned inside the damper's sliding groove. After completion, press the tray to make sure the pins are properly assembled in place.



Similarly, assemble the upper tray.

#### STEP - 04 -

### Installation completed



Installation of the Shearer Swing Tray 3.0 is completed, the basket can be pulled out and return smoothly.

HIGOLD®

Original Design & Quality

